



# MIDDLE AMERICA STEEL SERVICES



[WWW.MIDDLEAMERICASTEEL.COM](http://WWW.MIDDLEAMERICASTEEL.COM)

# Middle America Steel's Flex Kits

◆ IBC 2006 Code

◆ Pre-Engineered bolt together frames with 2:12 roof pitch

◆ Loads: 20# live load / 20# snow load / 90mph wind

◆ #1 26ga. 40 year color wall panels

◆ #1 26ga. 20 year galvalume roof panels

◆ Erection drawings included

## Building Kit Dimensions

◆ M.A.S.S. Garage - 24x30x10

◆ The Hobby Shop - 30x30x10

◆ The Countryside - 30x40x10

◆ The AbiLou - 30x50x12

◆ The Toy Box - 40x40x12

◆ The M.A.S.S. Barn - 40x50x12

◆ The Broken Arrow - 40x60x12

◆ The Southland - 50x75x12

◆ The Angel Fire - 50x100x12

◆ The Lone Star - 60x100x14

◆ The Warehouse Special - 100x100x16



◆ Shops ◆ Garages ◆ Barns

# Pre-Engineered/Design Build Steel Buildings

Middle America Steel customizes steel buildings based on the customer's needs, desires, and geographical area. We provide services for end users who are in need of a small shop as well as large commercial and industrial projects for general contractors. Professional erection is also offered in most areas in the United States.



- ◆ Office
- ◆ Warehouse
- ◆ Churches
- ◆ Retail
- ◆ Wide Bays



- ◆ Multi-Level
- ◆ Commercial
- ◆ Industrial

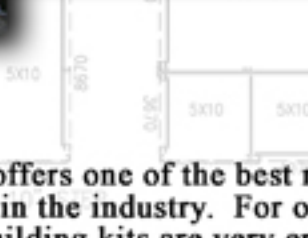
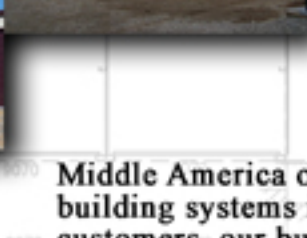
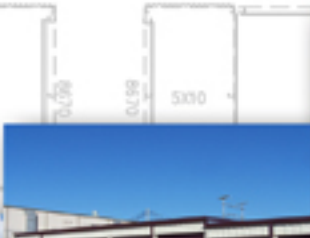


## Building Standards:

- Code: IBC 2006
- 20# Live Load / 30# Snow Load / 100 MPH Wind Load
- Pre-Fab Galvanized Base Clips w/1/2" Wedge Bolts
- 12"x4" Structural Cee mullion Between Doors
- Mullion Cap Trim
- 26ga. 20 yr. Galvalume "PBR" Roof Panels
- 26ga. 40 yr. Color "R" Wall Panels
- 29ga. 20yr. Galvalume "M" Interior Partition Wall Panels
- Long Life Roof Fasteners
- JanUS Model 650 Roll-up-Doors
- (4x7 doors in 5' units & 9x7 doors in 10' units)
- 24ga. Standing Seam Roof Panels Optional



# Excellence In Self Storage



Middle America offers one of the best mini storage building systems in the industry. For our do-it-yourself customers, our building kits are very erector friendly. Our American Series and Maxi-Mini Series have pre-designed unit mixes and can usually be shipped in 2 to 3 weeks. Middle America Steel offers feasibility studies, unit mix designs and professional steel erection in most areas of the United States. About 80% of our self storage projects are custom designed and about half of those are designed by owners or architectural firms.



# Climate-Controlled Self Storage



Middle America Steel is in the business of helping our customer's gain a larger percentage of the market share in their area. This means helping our customer's stand apart from the competition. We focus on adding a touch of class to all our climate controlled projects so that your facility will be more attractive to the public.



# Middle America's Steel Framed Homes



The Wisteria



The Wisteria Frame



The Wisteria w/Loft



Red-Iron Packages



Custom Erection



Custom Siding



Steel Studs

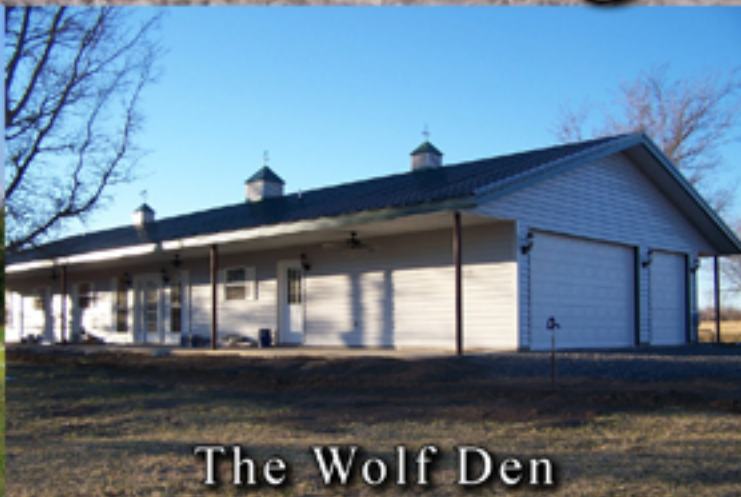


Springhill II



Garage Liners

# The Fusion of Strength and Beauty

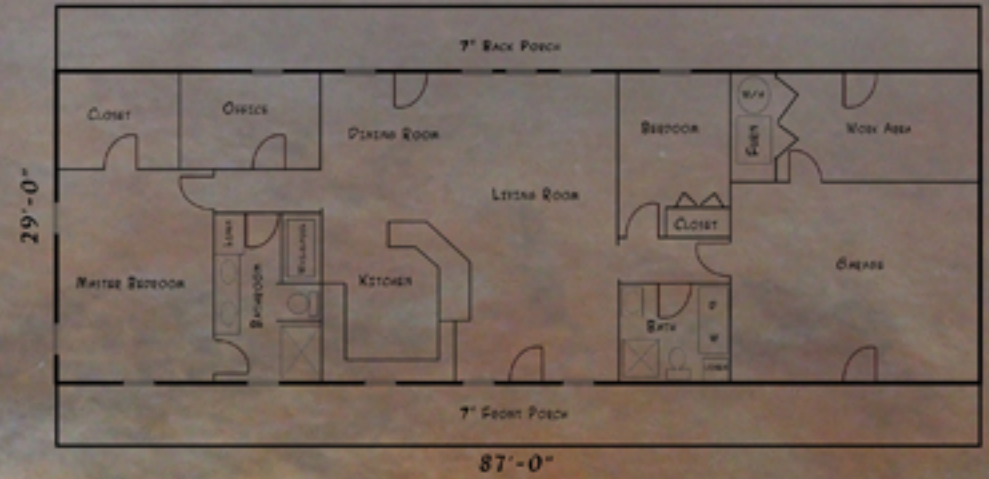


# Pre-Designed Floor Plans

THE SEVEN OAKS - 2,925 LIVING SQ FT



THE WOLF DEN - 1,827 LIVING SQ FT



THE SHILOH 1,320 LIVING SQ FT



THE STARTER 1,056 LIVING SQ FT



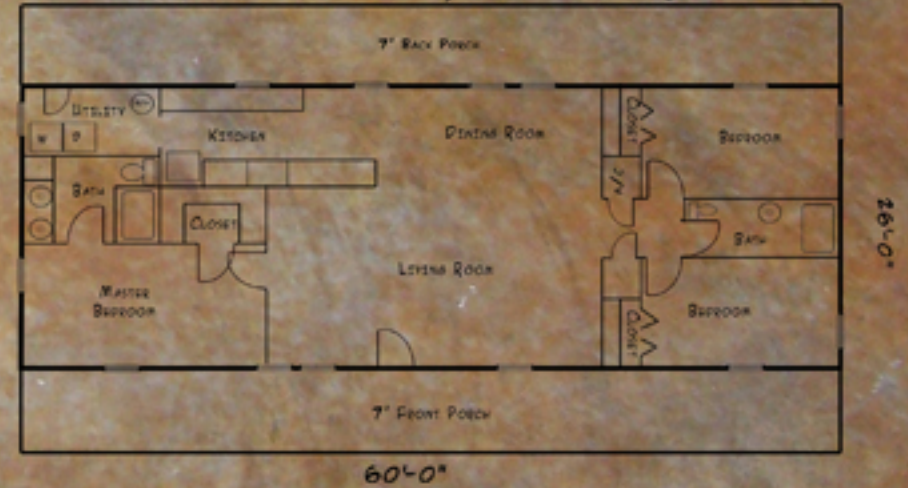
THE WISTERIA 1,225 LIVING SQ FT



THE KIRKLAND - 1,920 LIVING SQ FT



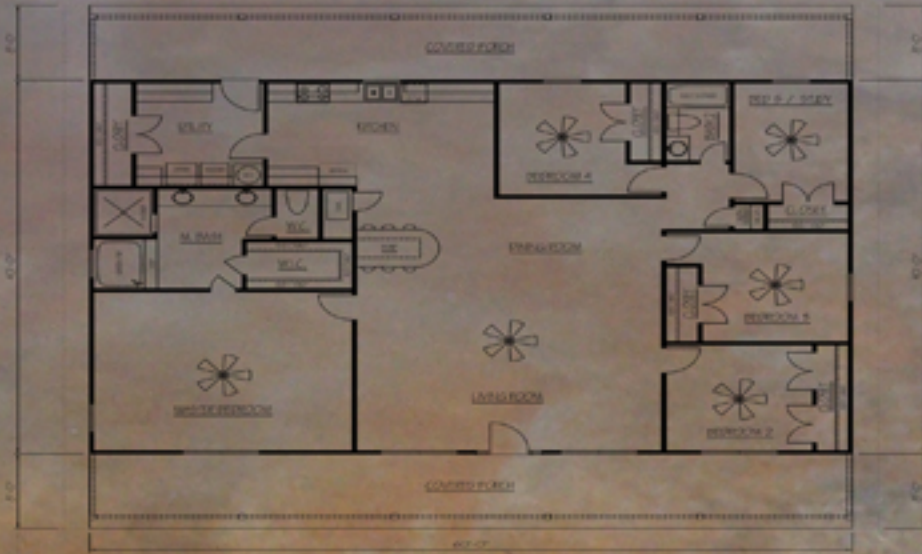
THE SPRINGHILL I - 1,560 LIVING SQ FT



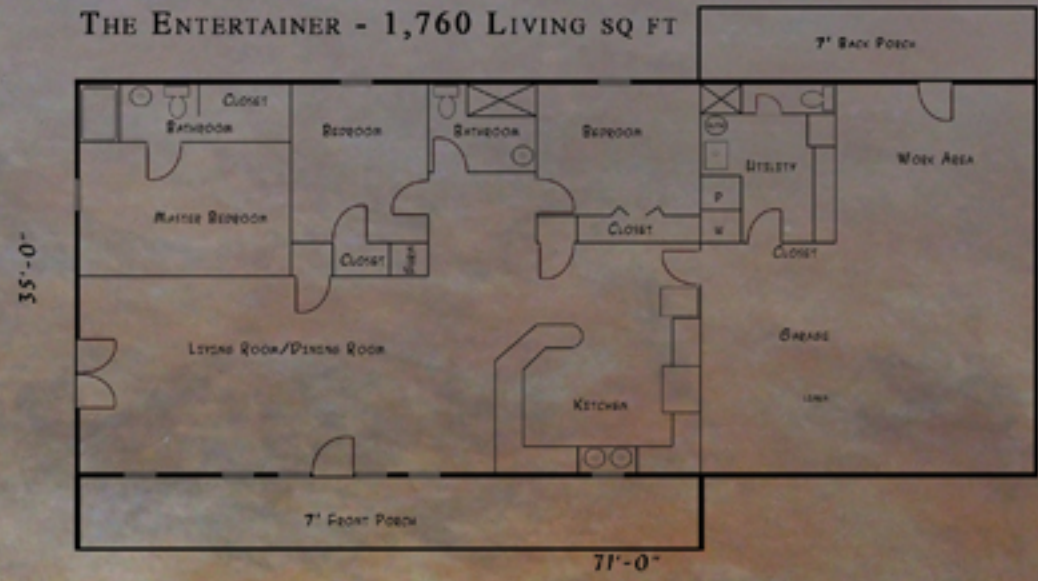


Flexible and Customized Floor Plans

THE LINDYKAT - 2,400 LIVING SQ FT



THE ENTERTAINER - 1,760 LIVING SQ FT



THE COMBO 1,408 LIVING SQ FT



THE CANADIAN VALLEY 1,040 LIVING SQ FT





Middle America can help you find the right solutions at the right price for whatever your steel needs may be. We strive to provide the best service possible for all your material and labor needs.

♦ Residential, Commercial & Industrial Roofing Solutions ♦

# Middle America Steel Services



♦ Drafting & Designs ♦ Stained Concrete ♦ Mezzanines ♦ Fast Delivery ♦ Custom Engineering ♦ Industrial Expansions ♦ Crane Buildings ♦ Feasibility Studies

♦ Steel Erection ♦

♦ Awnings & Facias ♦



♦ Low Maintenance Fences ♦





♦Fasteners♦



♦Reinforced Vinyl Fiberglass Insulation♦



♦12, 14, 16 ga. Red-Iron♦

# Middle America's Components & Accessories



♦Steel Clips ♦25, 20, & 18ga. Steel Studs & Hat Channels ♦Wall Light & Sky Light Panels ♦1/4" Reflective Foil Insulation ♦Concealed Fastener Panels

- ♦Full Line of Trim
- ♦Steel Walk Doors
- ♦Commercial Roll-Up-Doors
- ♦26ga. "PBR" Panels
- ♦29ga. & 26ga. Panel Loc
- ♦29ga. & 26ga. "M" Loc Panels
- ♦20ga. Stucco Coated Steel Wall Panels
- ♦28ga. Horizontal Wood-Grain Steel Siding
- ♦Faux Stone Panels



## MIDDLE AMERICA'S STEEL BUILDING COLORS



## MIDDLE AMERICA STEEL SERVICES

614 EAST MASON DRIVE

BROKEN ARROW, OK 74012

TOLL FREE 1-866-200-5211 / FAX 918-251-5828

[WWW.MIDDLEAMERICASTEEL.COM](http://WWW.MIDDLEAMERICASTEEL.COM)



## ROLL-UP-DOOR COLORS



\*COLORS ARE APPROXIMATE, NOT EXACT\*